

Community Governance Review of Eastwick and Gilston Parish Council

HAVE YOUR SAY

East Herts District Council is carrying out a Community Governance Review of Eastwick and Gilston Parish Council. All local residents and organisations are invited to give their views.

What is a Community Governance Review?

A Community Governance Review is a formal process which can result in changes to parish areas or electoral arrangements.

Parish councils are the most local tier of government in England. They can play an important role in empowering their communities, may comment on planning applications and manage or provide services at the local level.

Why is this review being undertaken?


The review is being undertaken following a request from Eastwick and Gilston Parish Council.


The Parish Council has asked for an increase in the number of parish councillors by one, from six to seven. This request is made on the basis that the completion of the Terlings Park development has resulted in the number of dwellings in Gilston being more than doubled and the Parish Council feels that an increase in the number of parish councillors is required to support this growth.

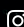
East Herts District Council needs to know the views of local residents and other interested parties in order to decide whether any changes should be made.

Please tell us what you think about the change suggested by the parish council or any other issues concerning parish governance or electoral arrangements.



 @Eastherts

 EastHertsDC

 easthertscouncil

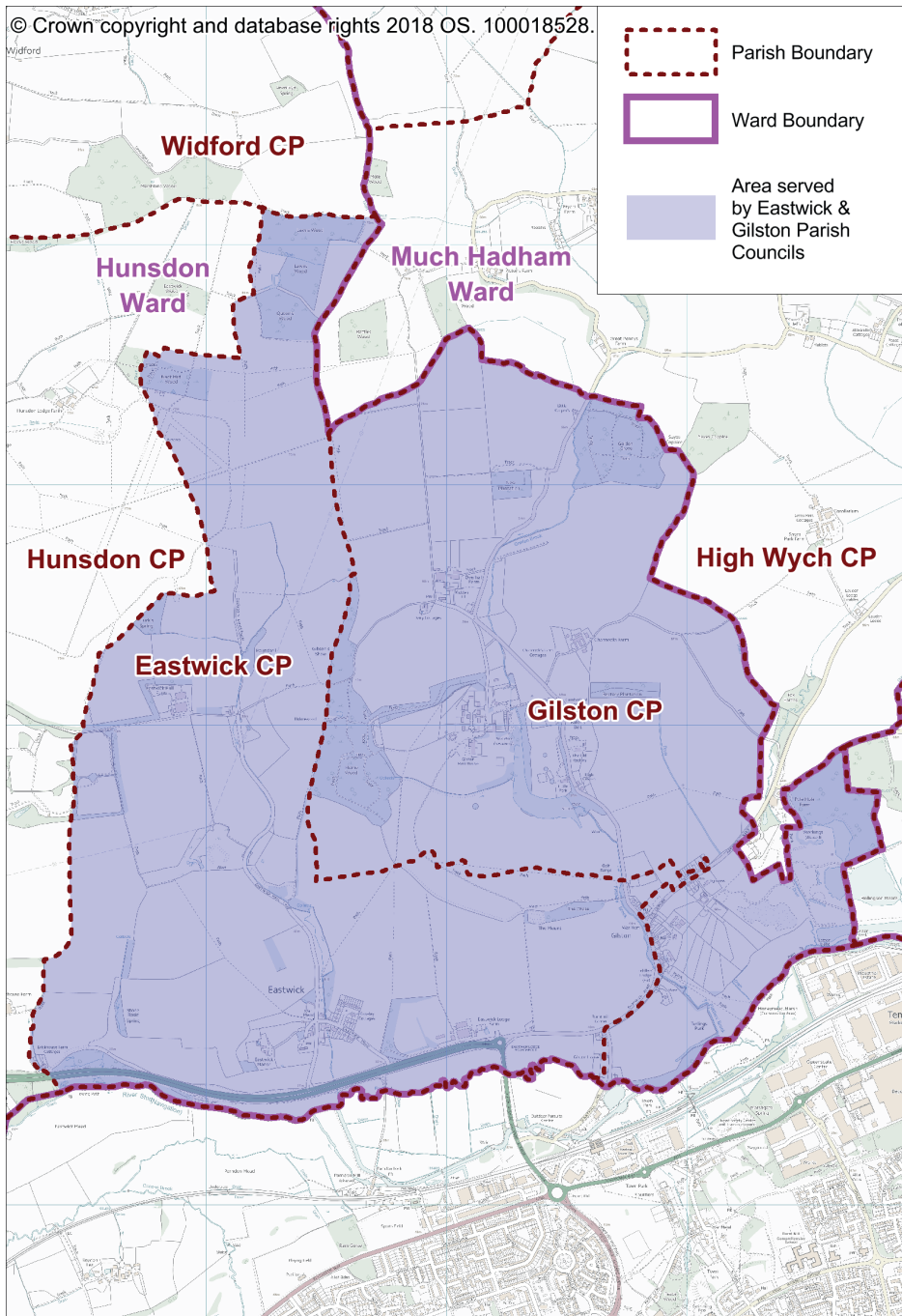
01279 655261

www.eastherts.gov.uk



Map

The map below shows the area covered by Eastwick and Gilston Parish Council and within this the boundaries of Eastwick and Gilston parishes.



How would residents be affected?

If the Parish Council's request is agreed, from the parish council elections in May 2019 electors of Gilston parish will elect four councillors to serve on the Parish Council rather than three as at present.

The table below gives current information about Eastwick and Gilston parishes.

Parish Council	No. of registered electors (March 2018)	No. of councillors	Council Tax Precept* 2018/19 (Band D Equivalent)
Eastwick	126	3	£11.53 per annum
Gilston	535	3	

*A precept is an amount charged by the parish council to provide additional local services. East Hertfordshire District Council collects this money as part of the council tax and passes it on to the parish council.

Issues for consideration

The minimum number of parish councillors for a parish council in law is five members. There is no maximum number. There are no statutory rules relating to the allocation of councillors but each parish grouped under a common parish council must have at least one parish councillor. Government guidance is that 'each area should be considered on its own merits, having regard to its population, geography and the pattern of communities'.

Eastwick and Gilston Parish Council currently has six parish councillors, three elected by the electors of each parish. The total electorate for Eastwick and Gilston parishes is currently 661 (March 2018). This figure has grown from 331 in 2015.

In considering the Parish Council's request for an additional councillor, East Hertfordshire District Council will have regard both to the current local electorate and any change likely to occur in the next five years. The Council will also consider:

- existing levels of representation in parishes across the district;
- the broad pattern of existing council sizes which have stood the test of time;
- the take-up of seats at elections;
- the recommendations of any national body representing parish and town councils;
and
- any published research on levels of representation.

Why your views are important

In carrying out the review, the council must seek to ensure that any proposals reflect the identity and interests of the community in the area and promote effective and convenient local government.

The council believes that parishes should reflect distinctive and recognisable communities of interest with their own sense of identity and that electors should be able to identify with the parish in which they live. The wishes of local inhabitants and any submissions providing evidence of community identity or local linkages are therefore important considerations in this review.

East Hertfordshire District Council will consider all submissions received during the review before reaching its final decisions.

The timetable for the review

Initial submissions should be sent to East Hertfordshire District Council by online form, email or in writing at the contact details below by **Friday April 27 2018**.

East Hertfordshire District Council will consider those submissions before publishing its draft recommendations for further consultation from May to July 2018. The review will conclude when the council publishes its final recommendations by October 2018.

How to find out more

Full information about the Community Governance Review including the terms of reference and detailed timetable together with maps of the area under review are on the website at **www.eastherts.gov.uk/consultations** or available at the East Hertfordshire District Council offices

How to have your say

You can provide your views on the matters in this leaflet or raise any queries by:

- completing a form online at **www.eastherts.gov.uk/consultations**;
- email to: **electors@eastherts.gov.uk**; or
- writing to: Electoral Services, East Herts Council, Wallfields, Pegs Lane, Hertford, Herts, SG13 8EQ